



ColorMatch HDR

HDR Analysis

Calibrator Information

Name: ZUNZHENG

Phone:

Address Line 1: 深圳市南山区南海大道

Address Line 2: 美年广场2栋6楼

City: 深圳市

State: 广东省 Zip: 518054

Calibrator: zunzheng

Calibration Targets

Gamut primaries: DCI P3

Gamma formula: ST_2084_HDR

Display Information

Display: zunzheng

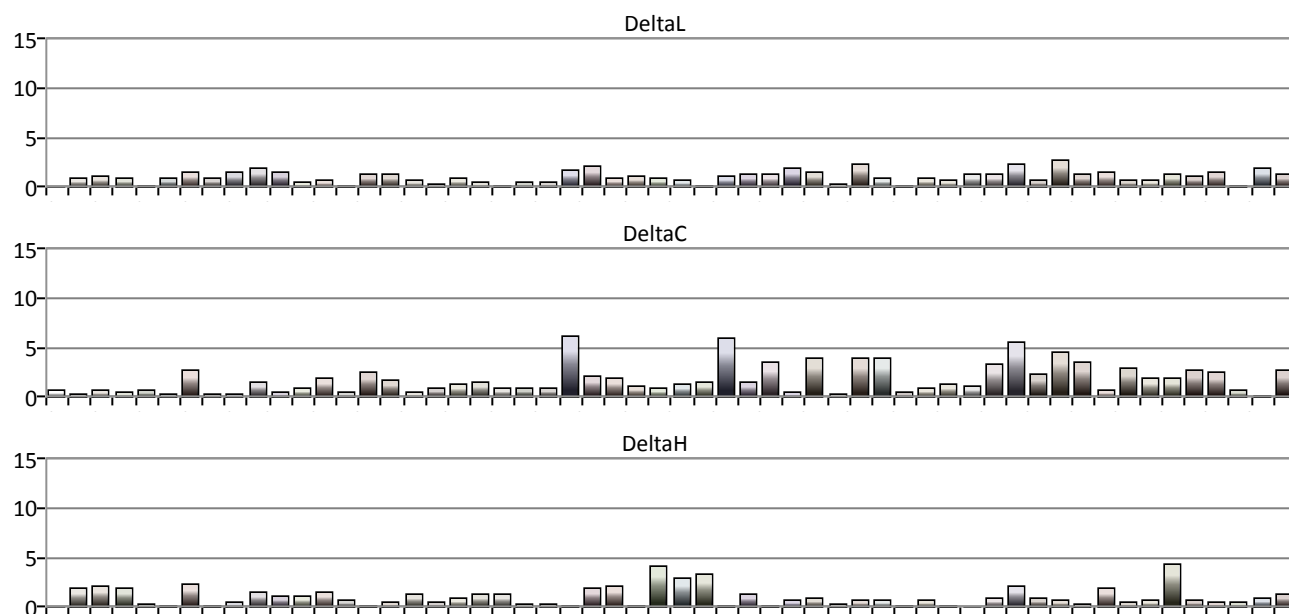
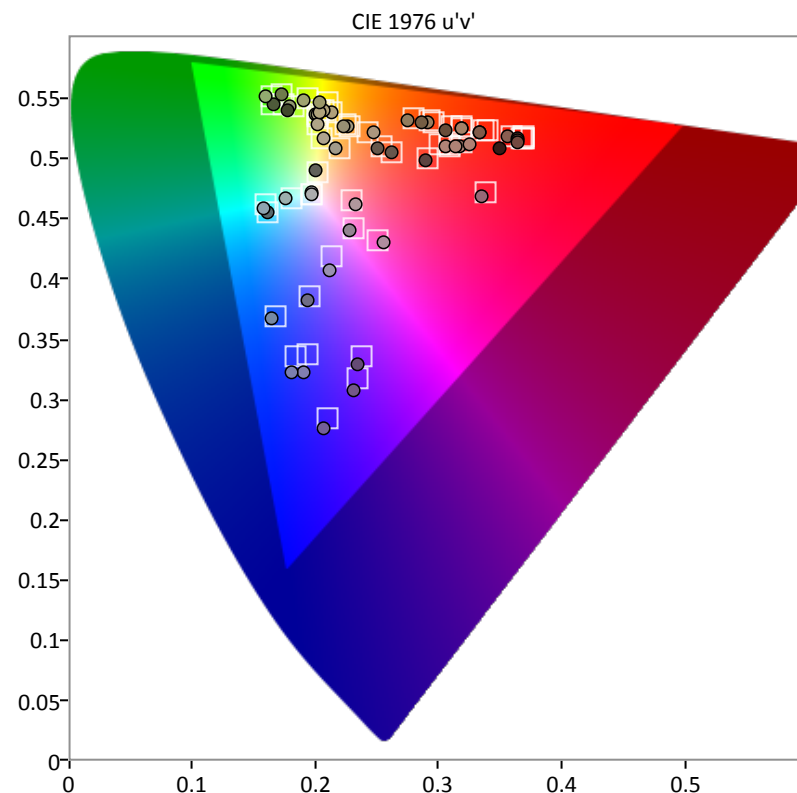
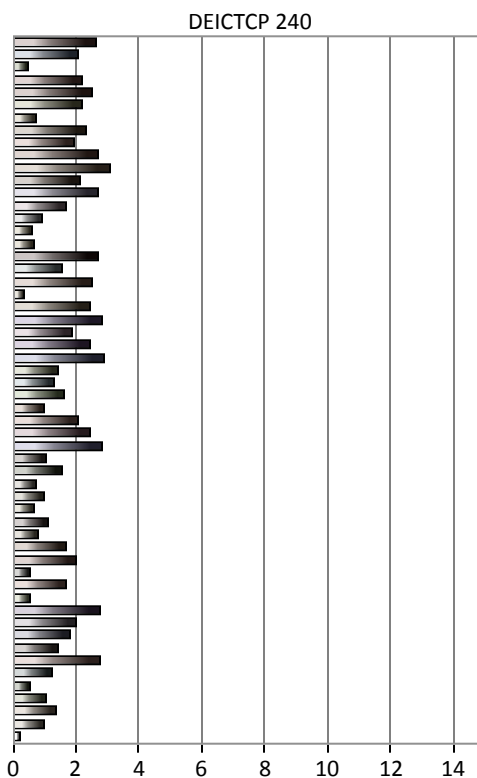
XM551U

XM551B8888

Calibration Equipment

Meter: Konica Minolta CS-200

Source: DaVinci Resolve pattern generator





ColorChecker

HDR Analysis

Calibrator Information

Name: ZUNZHENG

Phone:

Address Line 1: 深圳市南山区南海大道

Address Line 2: 美年广场2栋6楼

City: 深圳市

State: 广东省 Zip: 518054

Calibrator: zunzheng

Calibration Targets

Gamut primaries: DCI P3

Gamma formula: ST_2084_HDR

Display Information

Display: zunzheng

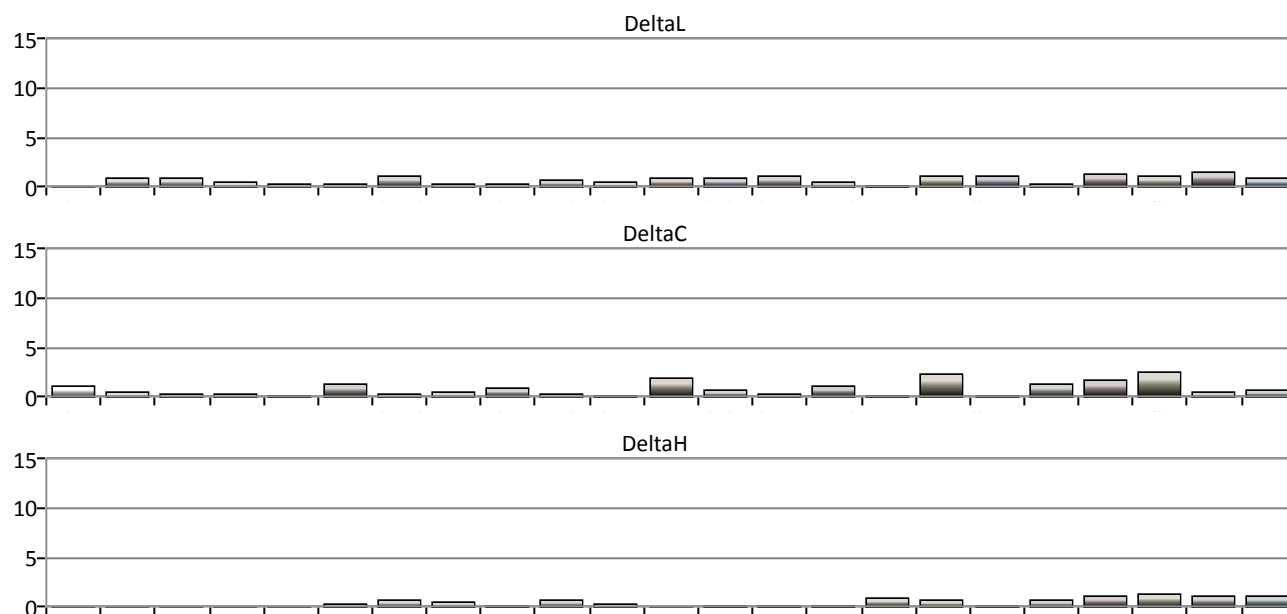
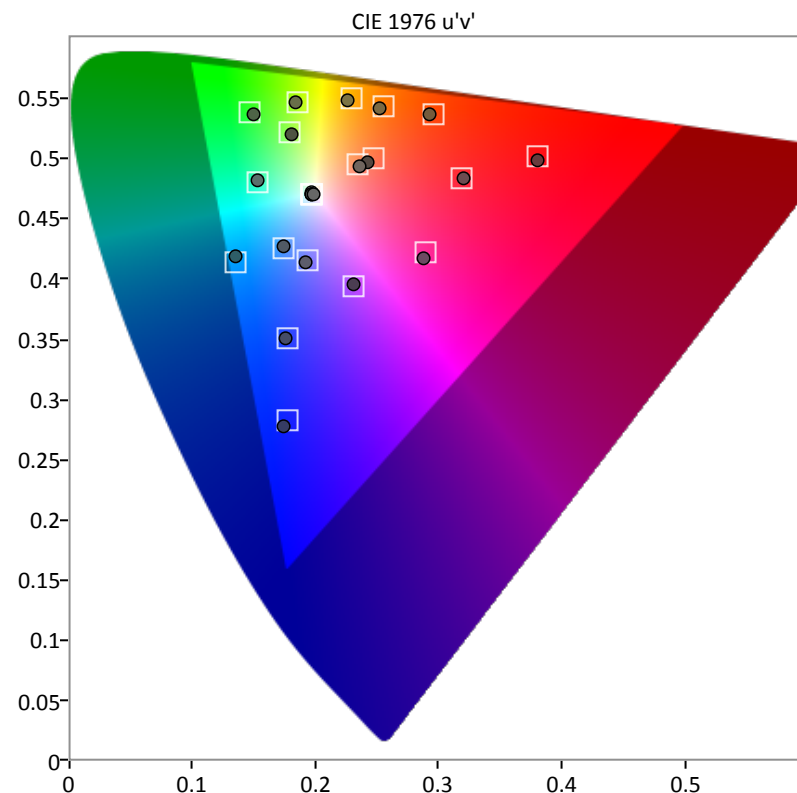
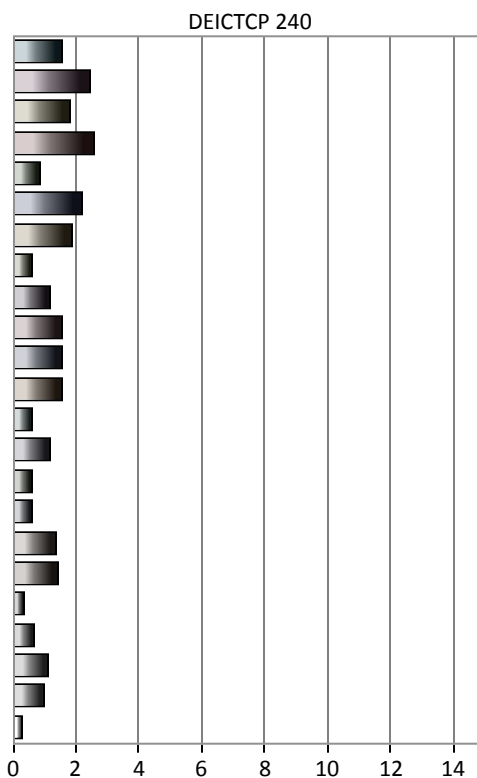
XM551U

XM551B8888

Calibration Equipment

Meter: Konica Minolta CS-200

Source: DaVinci Resolve pattern generator





P3 Sweeps

HDR Analysis

Calibrator Information

Name: ZUNZHENG
Phone:
Address Line 1: 深圳市南山区南海大道
Address Line 2: 美年广场2栋6楼
City: 深圳市
State: 广东省 Zip: 518054
Calibrator: zunzheng

Calibration Targets

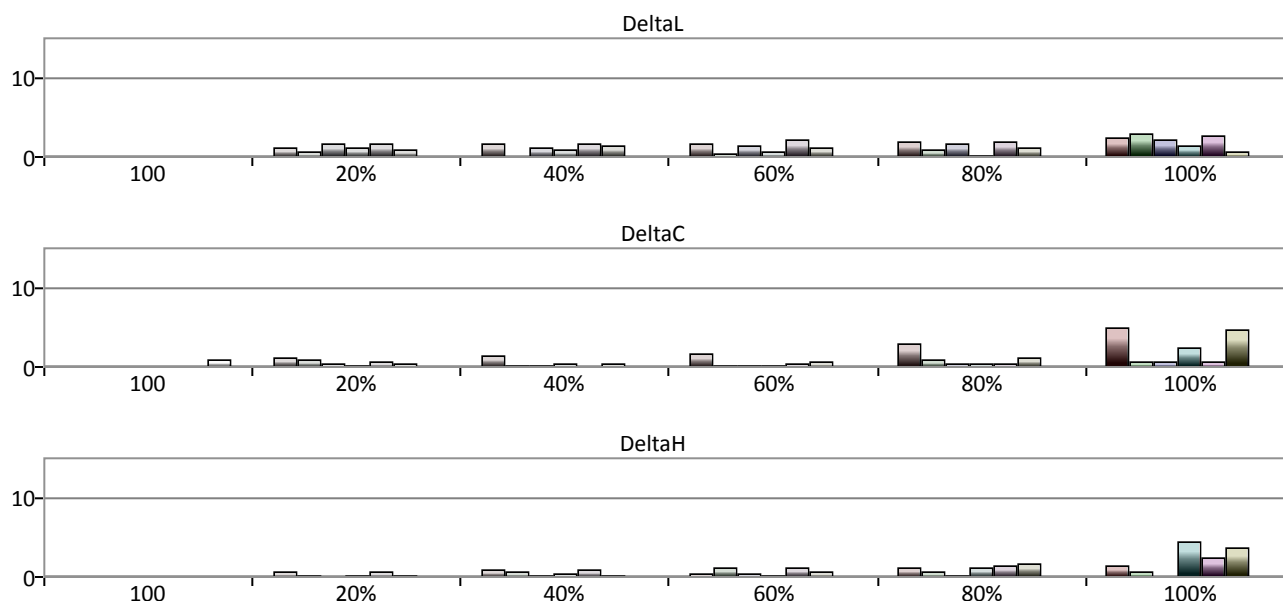
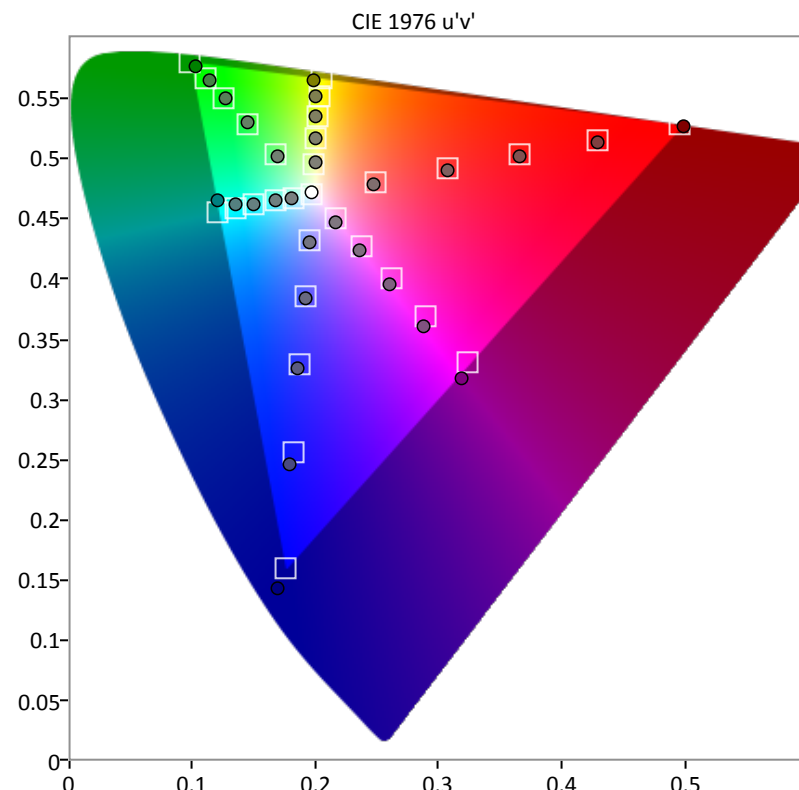
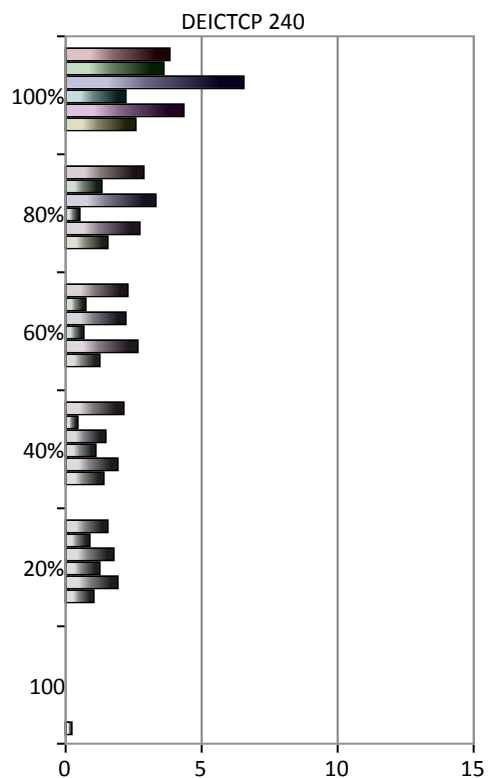
Gamut primaries: DCI P3
Gamma formula: ST_2084_HDR

Display Information

Display: zunzheng
XM551U
XM551B8888

Calibration Equipment

Meter: Konica Minolta CS-200
Source: DaVinci Resolve pattern generator



UHDA-P3 Gamut Coverage



HDR Analysis

Calibrator Information

Name: ZUNZHENG
 Phone:
 Address Line 1: 深圳市南山区南海大道
 Address Line 2: 美年广场2栋6楼
 City: 深圳市
 State: 广东省 Zip: 518054
 Calibrator: zunzheng

Calibration Targets

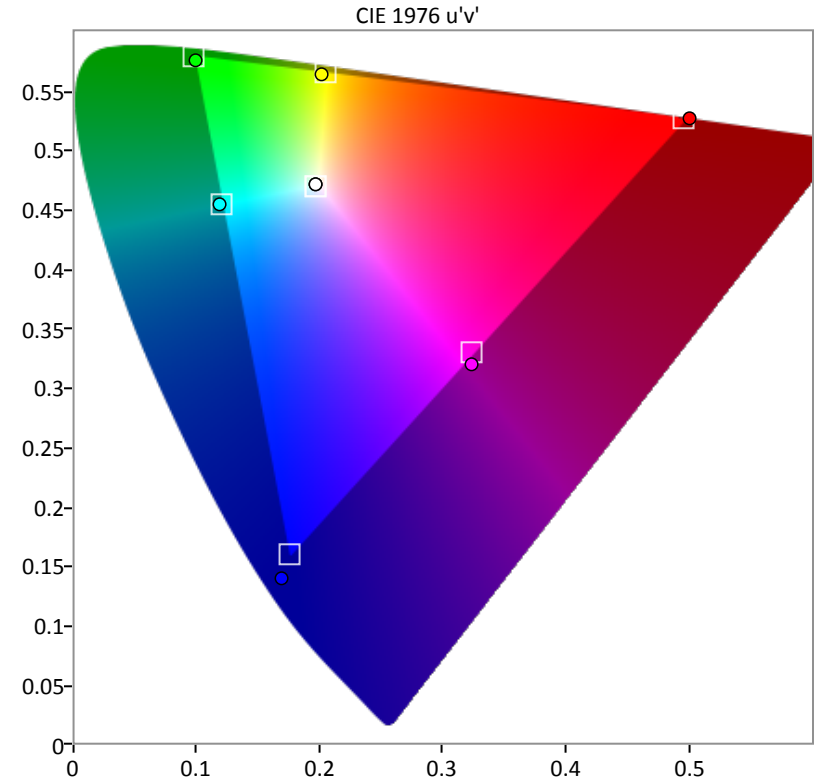
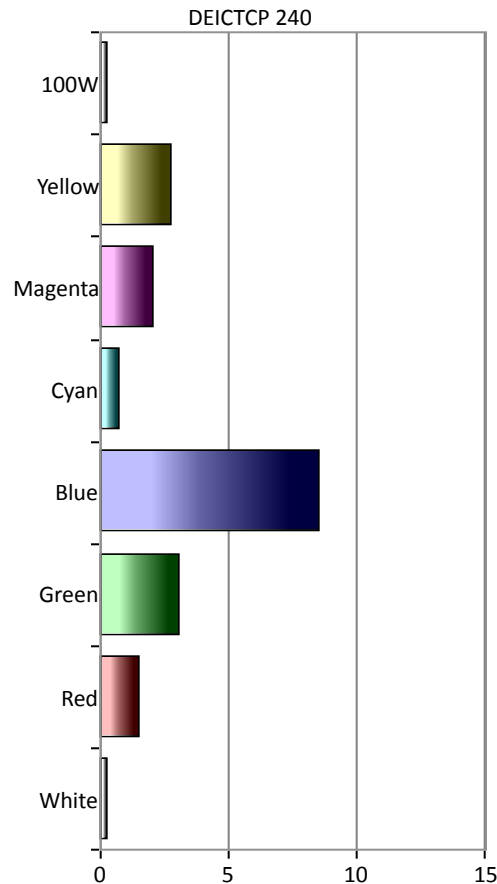
Gamut primaries: DCI P3
 Gamma formula: ST_2084_HDR

Display Information

Display: zunzheng
 XM551U
 XM551B8888

Calibration Equipment

Meter: Konica Minolta CS-200
 Source: DaVinci Resolve pattern generator



UHDA-P3 Percent 1931 xy: 97.43%
 UHDA-P3 Percent 1976 uv: 99.17%

Target x:CIE31	0.3127	0.6800	0.2650	0.1500	0.1996	0.3362	0.4378	0.3127
Target y:CIE31	0.3290	0.3200	0.6900	0.0600	0.3318	0.1513	0.5359	0.3290
Target Y cd/m ²	378.2630	86.6181	261.6562	29.9888	291.6449	116.6068	348.2742	378.2630
x: CIE31	0.3130	0.6824	0.2644	0.1416	0.1967	0.3302	0.4305	0.3130
y: CIE31	0.3307	0.3176	0.6734	0.0511	0.3296	0.1442	0.5318	0.3307
Y cd/m ²	378.2630	83.1330	265.1730	25.5340	290.9010	108.8210	352.8250	378.2630
ΔE 2000	1.2115	1.0964	1.4533	2.3363	0.5360	1.7143	1.8513	1.2115
dEITP	0.7143	4.5398	9.1967	25.4643	2.1164	6.0797	8.2557	0.7143