



尊正

# Multipoint Grayscale

## SDR Analysis

### Calibrator Information

Name: ZUNZHENG  
Phone:  
Address Line 1: 深圳市南山区南海大道  
Address Line 2: 美年广场2栋6楼  
City: 深圳市  
State: 广东省 Zip: 518054  
Calibrator: zunzheng

### Calibration Targets

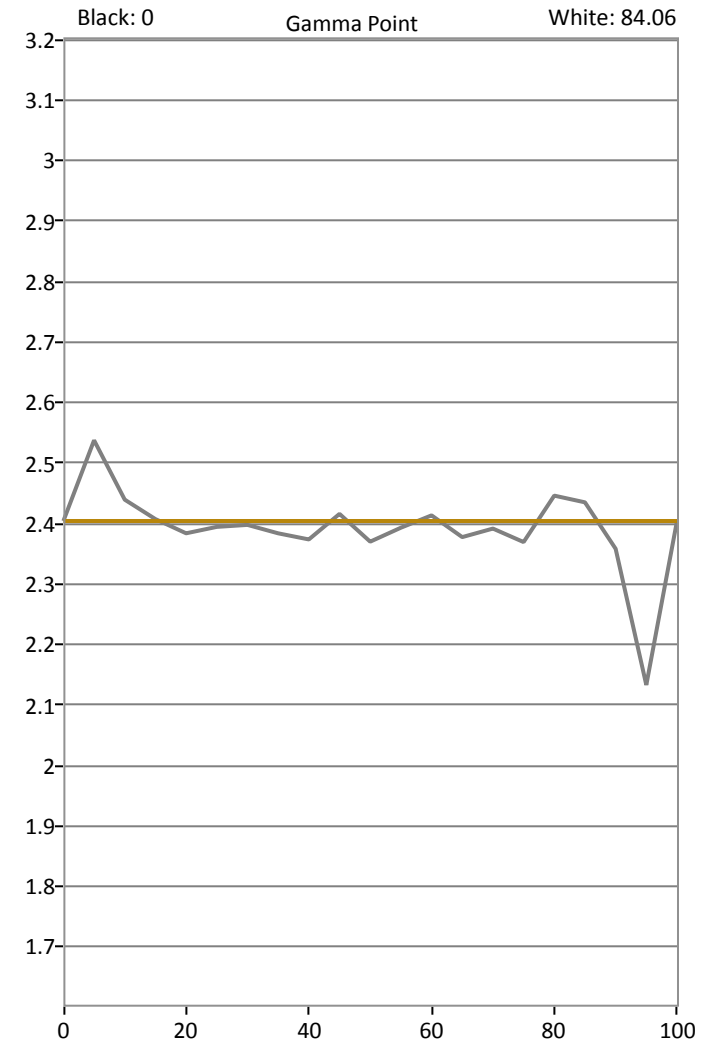
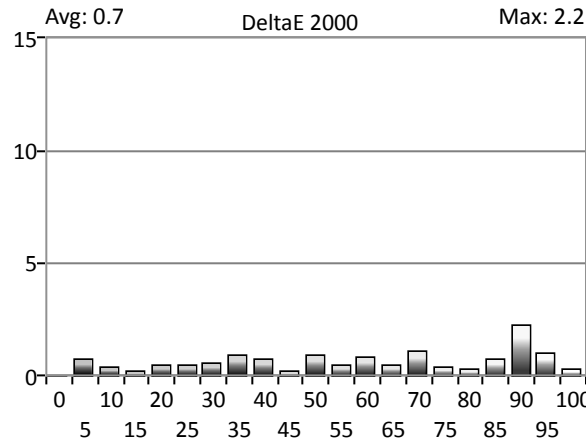
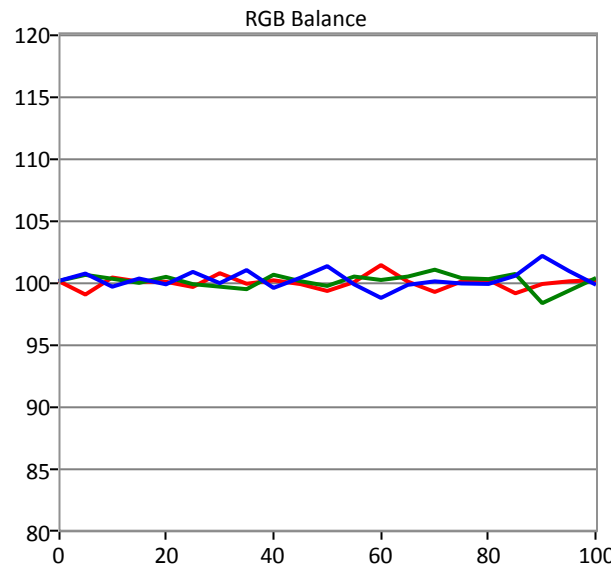
Gamut primaries: rec.709/sRGB  
Gamma formula: PowerFunction  
Gamma: 2.4

### Display Information

Display: zunzheng  
XM551U  
XM551B8888

### Calibration Equipment

Meter: Konica Minolta CS-200  
Source: DaVinci Resolve pattern generator



|                |        |         |        |        |        |        |        |        |        |         |         |         |         |         |         |         |         |         |         |         |         |
|----------------|--------|---------|--------|--------|--------|--------|--------|--------|--------|---------|---------|---------|---------|---------|---------|---------|---------|---------|---------|---------|---------|
| Target x:CIE31 | 0.3127 | 0.3127  | 0.3127 | 0.3127 | 0.3127 | 0.3127 | 0.3127 | 0.3127 | 0.3127 | 0.3127  | 0.3127  | 0.3127  | 0.3127  | 0.3127  | 0.3127  | 0.3127  | 0.3127  | 0.3127  | 0.3127  |         |         |
| Target y:CIE31 | 0.3290 | 0.3290  | 0.3290 | 0.3290 | 0.3290 | 0.3290 | 0.3290 | 0.3290 | 0.3290 | 0.3290  | 0.3290  | 0.3290  | 0.3290  | 0.3290  | 0.3290  | 0.3290  | 0.3290  | 0.3290  | 0.3290  |         |         |
| Target Y cd/m² | 0.0000 | 0.0641  | 0.3383 | 0.8953 | 1.7857 | 3.0507 | 4.7254 | 6.8408 | 9.4251 | 12.5041 | 16.1017 | 19.8410 | 24.4895 | 29.7181 | 35.5458 | 41.9908 | 49.0704 | 56.8015 | 65.2000 | 74.2815 | 84.0610 |
| x: CIE31       | 0.3333 | 0.2313  | 0.3175 | 0.3121 | 0.3131 | 0.3106 | 0.3140 | 0.3113 | 0.3134 | 0.3122  | 0.3107  | 0.3128  | 0.3150  | 0.3129  | 0.3120  | 0.3128  | 0.3129  | 0.3117  | 0.3114  | 0.3123  | 0.3129  |
| y: CIE31       | 0.3333 | 0.3209  | 0.3358 | 0.3276 | 0.3310 | 0.3263 | 0.3283 | 0.3257 | 0.3310 | 0.3285  | 0.3264  | 0.3299  | 0.3310  | 0.3299  | 0.3302  | 0.3295  | 0.3294  | 0.3292  | 0.3252  | 0.3275  | 0.3295  |
| Y cd/m²        | 0.0000 | 0.0430  | 0.3120 | 0.8900 | 1.8450 | 3.0920 | 4.7620 | 6.9880 | 9.6910 | 12.3880 | 16.4850 | 19.9740 | 24.3730 | 30.0630 | 35.7060 | 42.4160 | 48.6110 | 56.5160 | 65.5180 | 75.3270 | 84.0610 |
| ΔE 2000        | 0.0000 | 0.7542  | 0.3612 | 0.2018 | 0.4746 | 0.5138 | 0.5889 | 0.9335 | 0.7959 | 0.2405  | 0.9633  | 0.4634  | 0.8126  | 0.5138  | 1.0913  | 0.3658  | 0.2960  | 0.7721  | 2.2462  | 1.0341  | 0.3208  |
| dEITP          | 0.0029 | 12.0397 | 2.5316 | 0.3385 | 1.4206 | 1.0509 | 0.8327 | 1.5212 | 1.6509 | 0.5968  | 1.7778  | 0.5144  | 1.1732  | 0.7956  | 0.8330  | 0.6932  | 0.6691  | 0.7338  | 1.4952  | 1.1741  | 0.1911  |



## SDR Analysis

### Calibrator Information

Name: ZUNZHENG  
 Phone:  
 Address Line 1: 深圳市南山区南海大道  
 Address Line 2: 美年广场2栋6楼  
 City: 深圳市  
 State: 广东省 Zip: 518054  
 Calibrator: zunzheng

### Calibration Targets

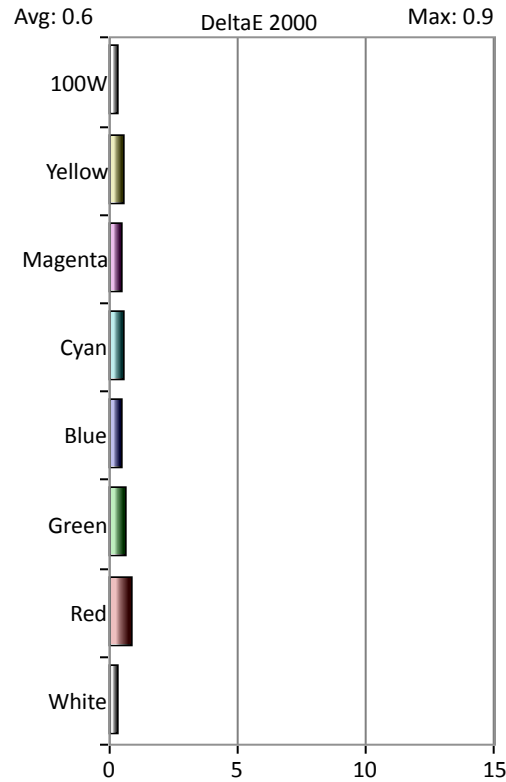
Gamut primaries: rec.709/sRGB  
 Gamma formula: PowerFunction  
 Gamma: 2.4

### Display Information

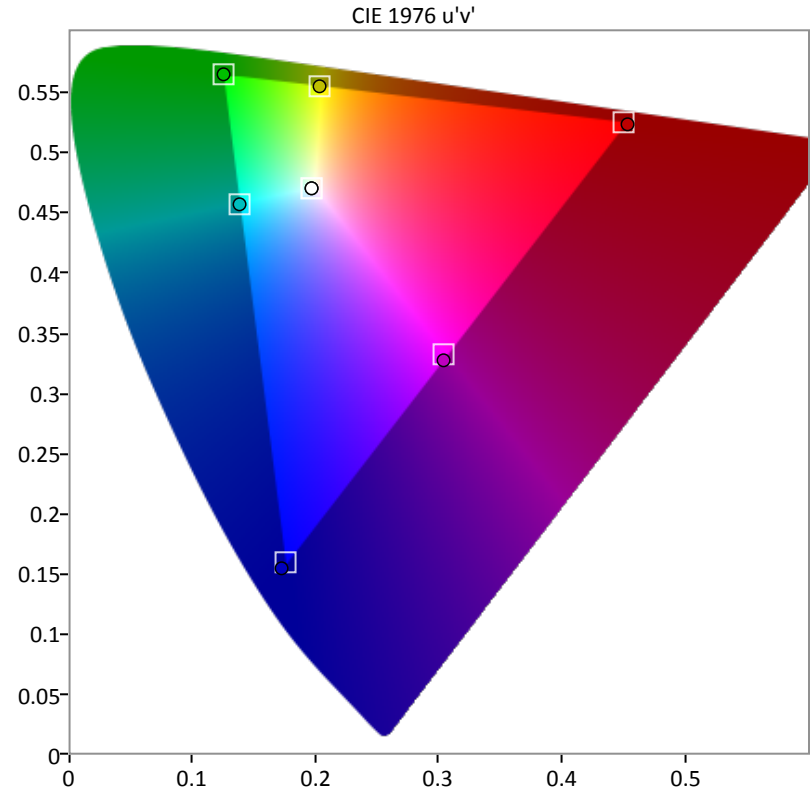
Display: zunzheng  
 XM551U  
 XM551B8888

### Calibration Equipment

Meter: Konica Minolta CS-200  
 Source: DaVinci Resolve pattern generator



# Gamut



|                            |         |        |         |        |         |         |         |         |
|----------------------------|---------|--------|---------|--------|---------|---------|---------|---------|
| Target x:CIE31             | 0.3127  | 0.6400 | 0.3000  | 0.1500 | 0.2247  | 0.3209  | 0.4193  | 0.3127  |
| Target y:CIE31             | 0.3290  | 0.3300 | 0.6000  | 0.0600 | 0.3287  | 0.1542  | 0.5053  | 0.3290  |
| Target Y cd/m <sup>2</sup> | 42.0572 | 8.9437 | 30.0776 | 3.0359 | 33.1135 | 11.9796 | 39.0213 | 84.1940 |
| x: CIE31                   | 0.3128  | 0.6406 | 0.3002  | 0.1470 | 0.2247  | 0.3172  | 0.4190  | 0.3129  |
| y: CIE31                   | 0.3295  | 0.3270 | 0.5991  | 0.0576 | 0.3278  | 0.1508  | 0.5054  | 0.3295  |
| Y cd/m <sup>2</sup>        | 42.5030 | 8.7930 | 30.9960 | 3.0230 | 33.9030 | 11.9680 | 40.0050 | 84.1940 |
| $\Delta E$ 2000            | 0.3878  | 0.8728 | 0.6794  | 0.4889 | 0.5621  | 0.5127  | 0.5724  | 0.3318  |
| dEITP                      | 0.7255  | 2.8220 | 1.9590  | 6.2464 | 1.5922  | 1.8271  | 1.6738  | 0.1896  |



## SDR Analysis

### Calibrator Information

Name: ZUNZHENG

Phone:

Address Line 1: 深圳市南山区南海大道

Address Line 2: 美年广场2栋6楼

City: 深圳市

State: 广东省 Zip: 518054

Calibrator: zunzheng

### Calibration Targets

Gamut primaries: rec.709/sRGB

Gamma formula: PowerFunction

Gamma: 2.4

### Display Information

Display: zunzheng

XM551U

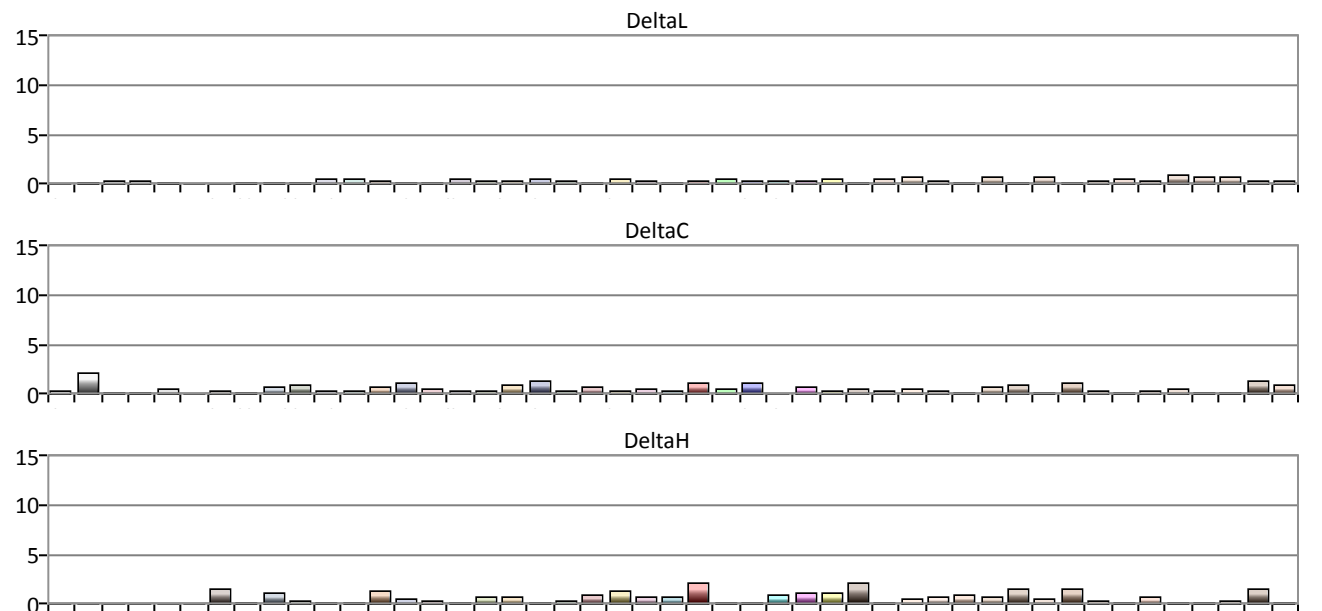
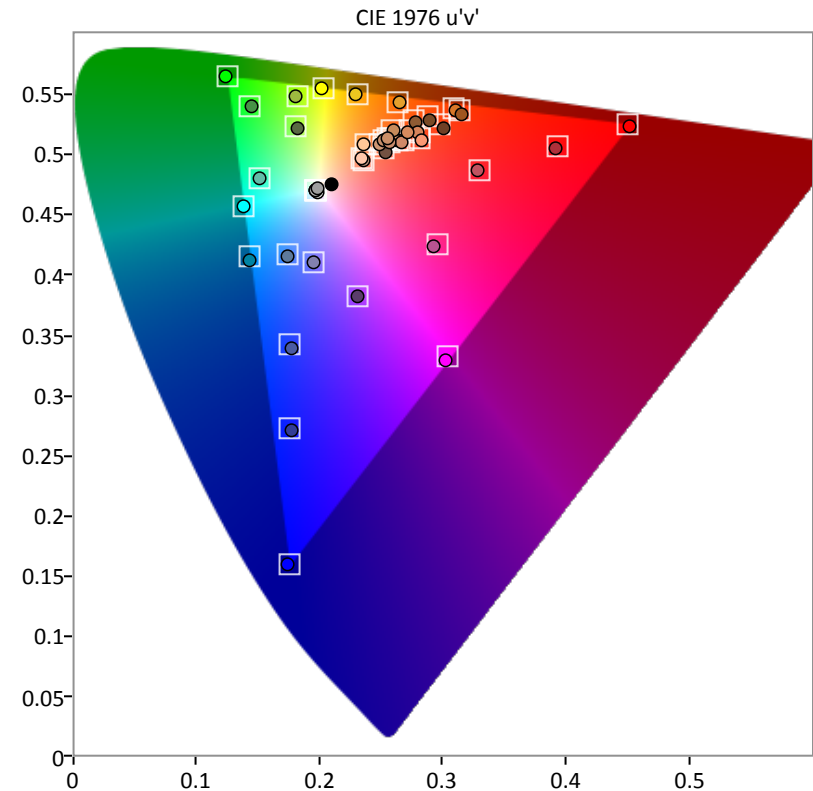
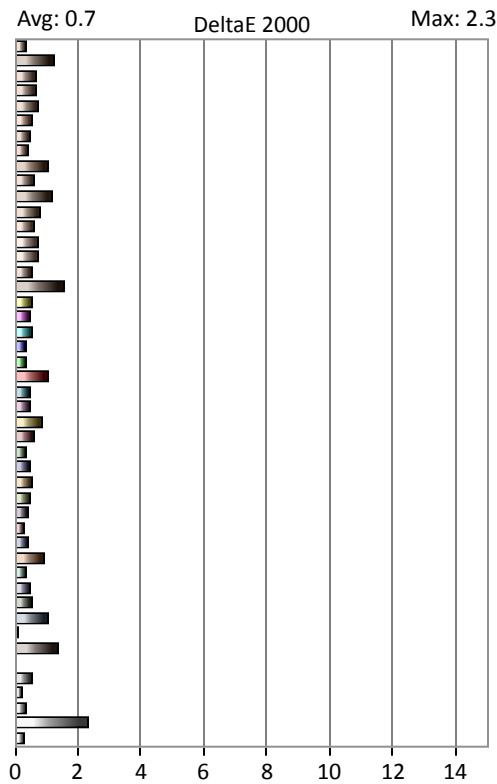
XM551B8888

### Calibration Equipment

Meter: Konica Minolta CS-200

Source: DaVinci Resolve pattern generator

# ColorChecker





尊正

## SDR Analysis

### Calibrator Information

Name: ZUNZHENG

Phone:

Address Line 1: 深圳市南山区南海大道

Address Line 2: 美年广场2栋6楼

City: 深圳市

State: 广东省 Zip: 518054

Calibrator: zunzheng

### Calibration Targets

Gamut primaries: rec.709/sRGB

Gamma formula: PowerFunction

Gamma: 2.4

### Display Information

Display: zunzheng

XM551U

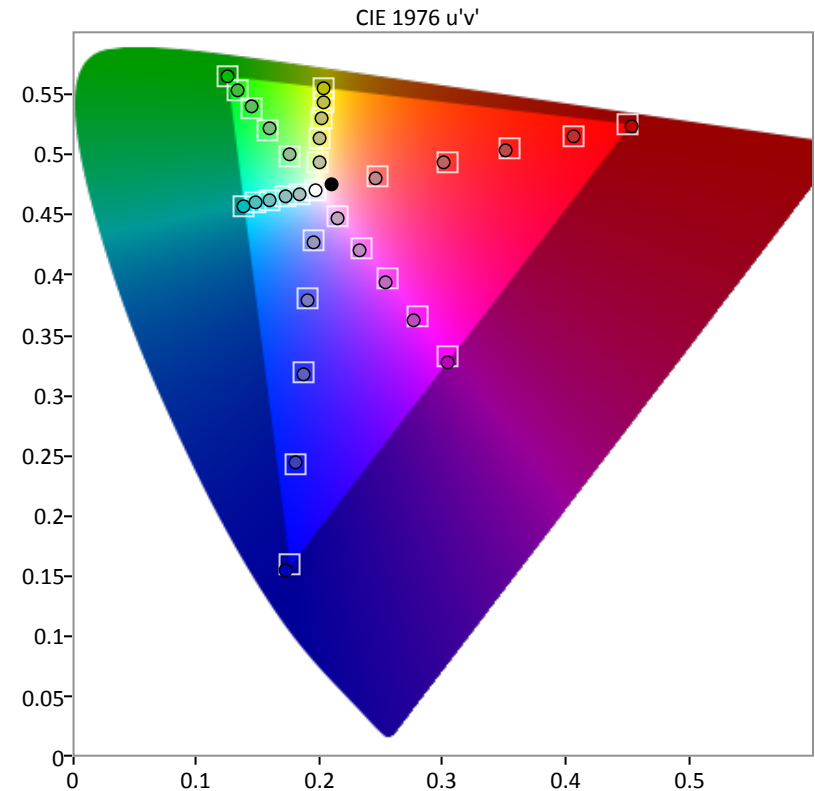
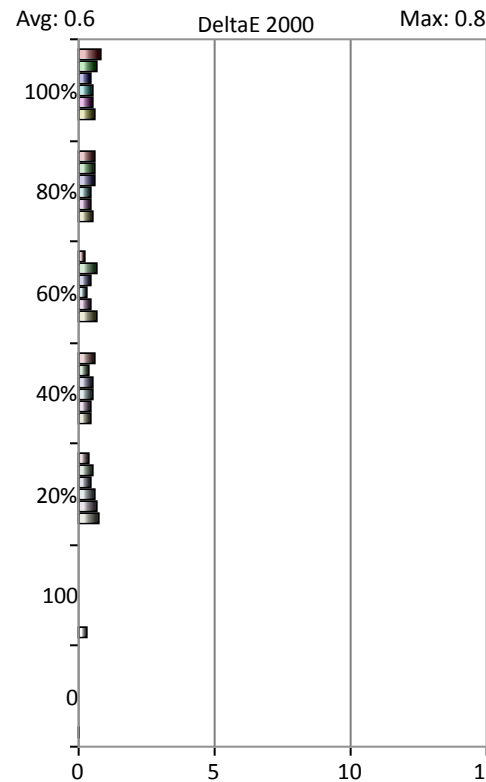
XM551B8888

### Calibration Equipment

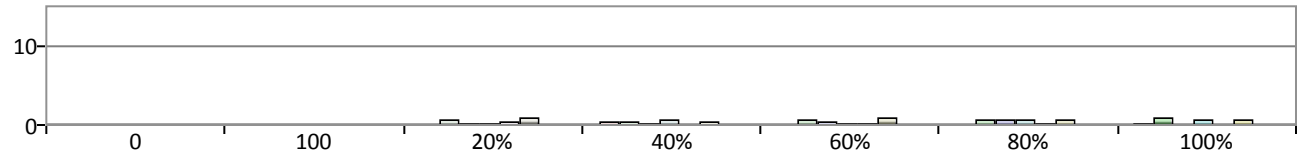
Meter: Konica Minolta CS-200

Source: DaVinci Resolve pattern generator

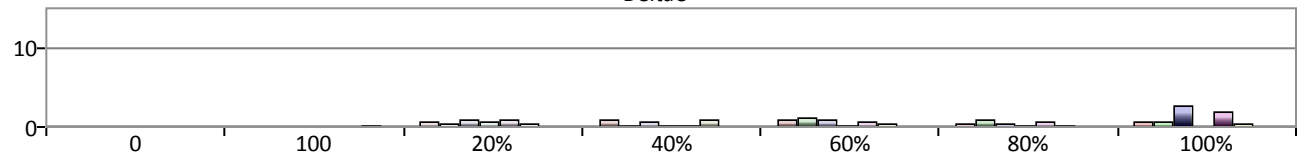
# Saturation Sweeps



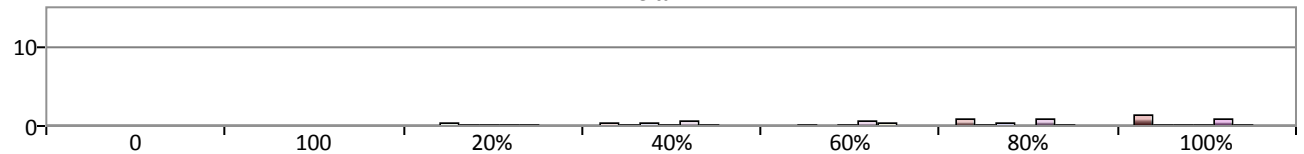
DeltaL



DeltaC



DeltaH





尊正

# Luminance Sweeps

## SDR Analysis

### Calibrator Information

Name: ZUNZHENG

Phone:

Address Line 1: 深圳市南山区南海大道

Address Line 2: 美年广场2栋6楼

City: 深圳市

State: 广东省 Zip: 518054

Calibrator: zunzheng

### Calibration Targets

Gamut primaries: rec.709/sRGB

Gamma formula: PowerFunction

Gamma: 2.4

### Display Information

Display: zunzheng

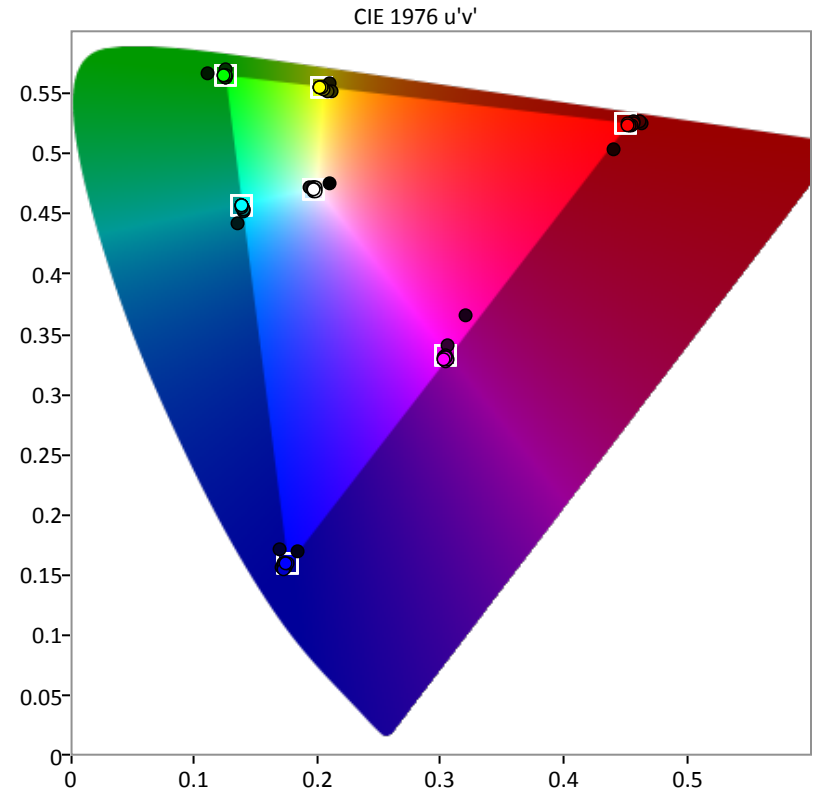
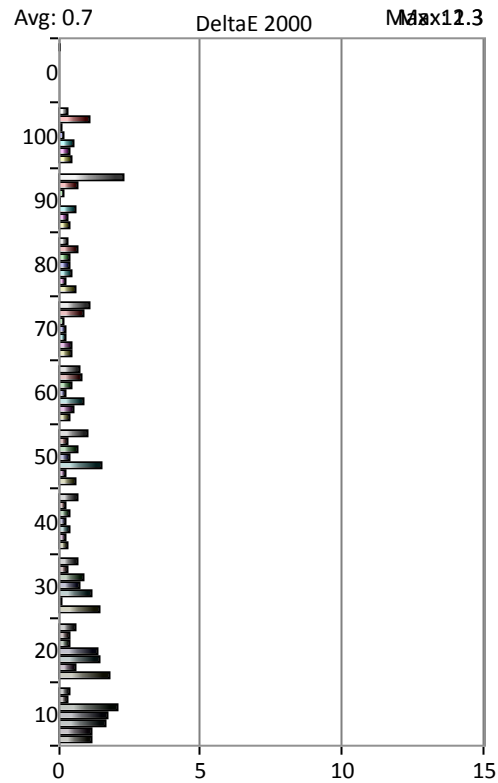
XM551U

XM551B8888

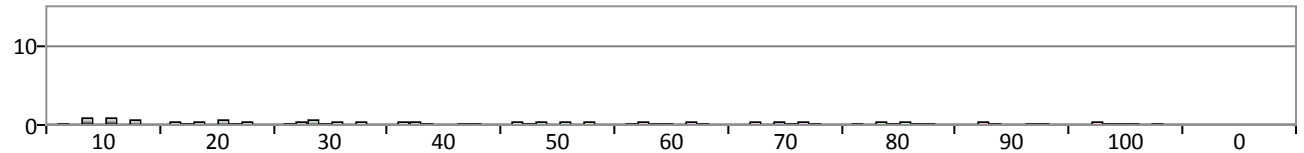
### Calibration Equipment

Meter: Konica Minolta CS-200

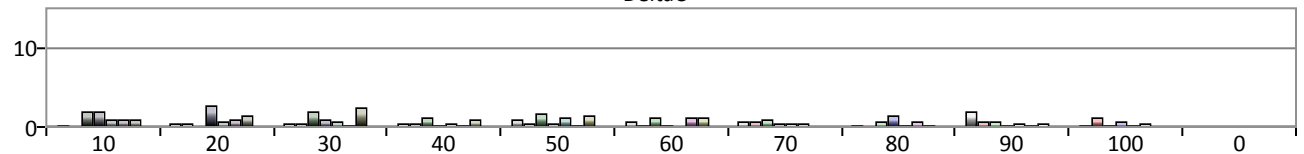
Source: DaVinci Resolve pattern generator



DeltaL



DeltaC



DeltaH

